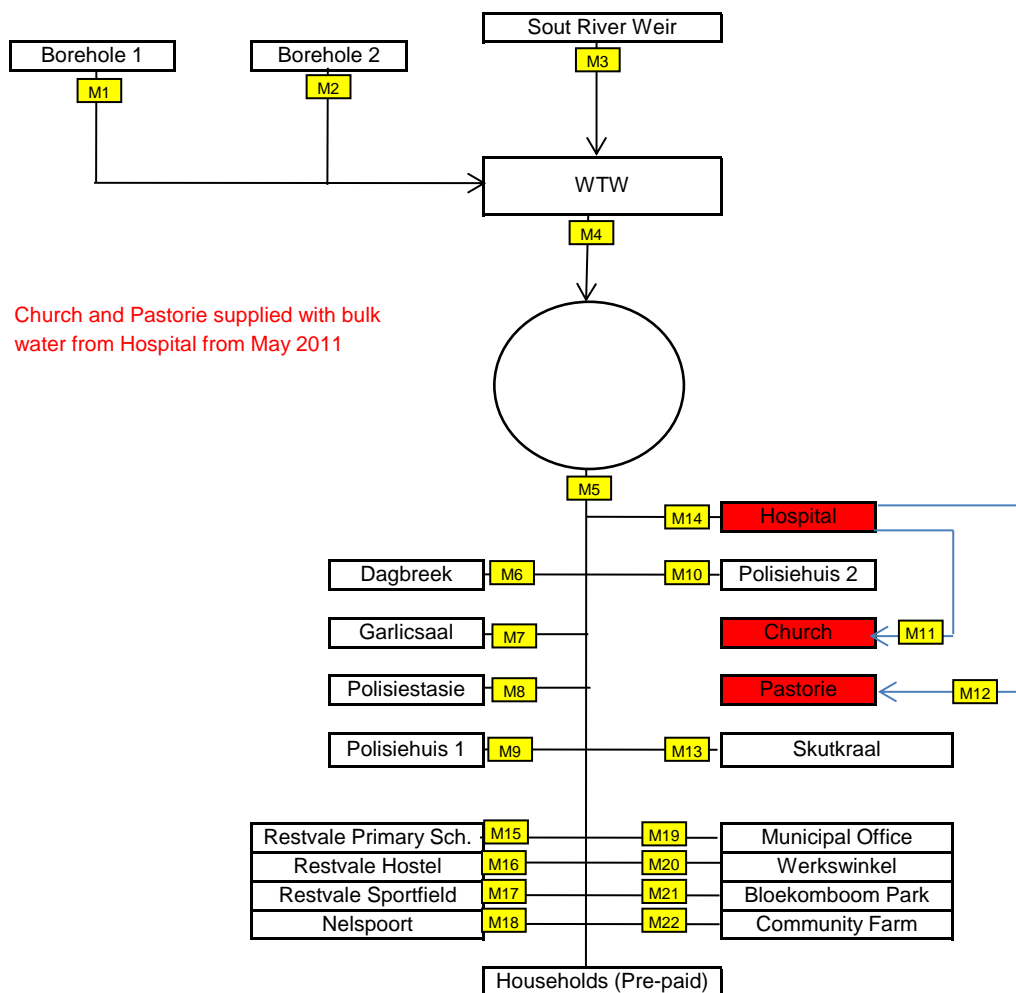
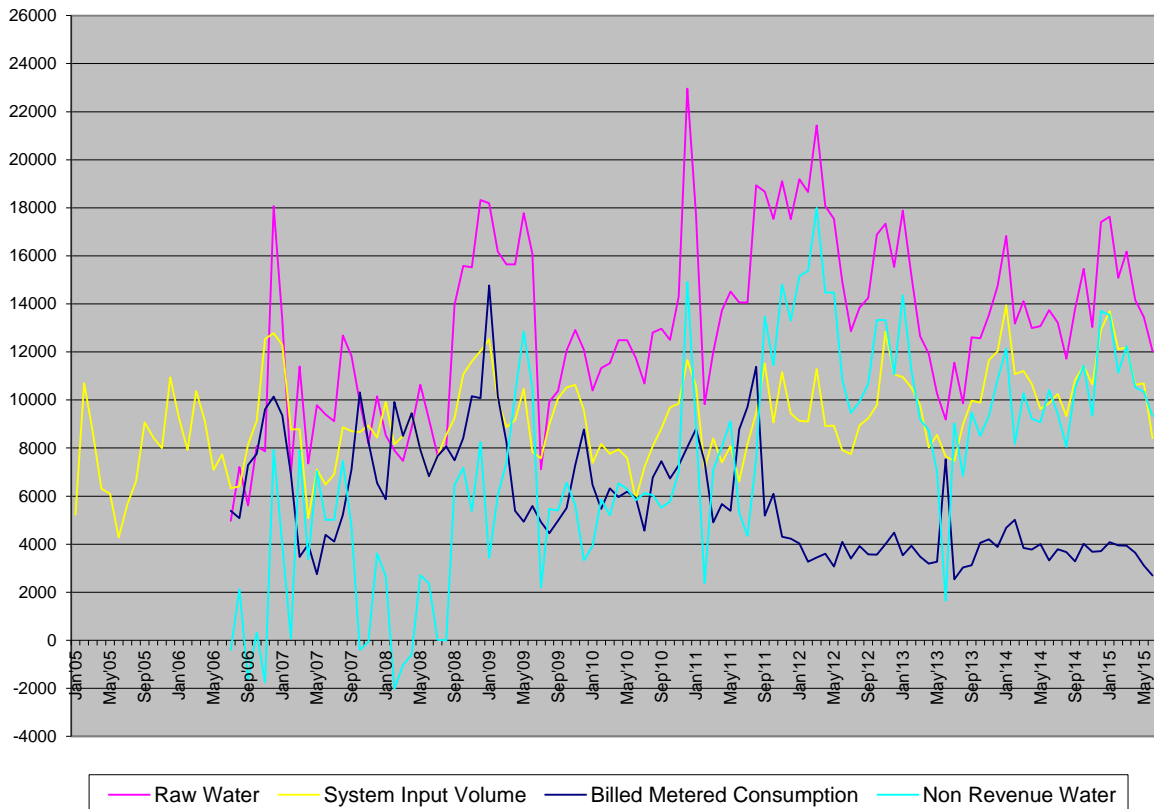


BEAUFORT WEST MUNICIPALITY																																	
		Nelspoort														NETWORK DISTRIBUTION LOSSES														TOTAL LOSSES			
Month	Year	BULK WATER SUPPLY LOSSES														Water Services Internal Meters																	
		A	B	C	D	E	F	G	H	I	J	K	L	M	N	O	P	Q	R	S	T	U	V	W	X	Y	Z	AA	AB	AC			
		Borehole 1	Borehole 2	Sout River	Total Raw Water Supply	Treated Water to Reservoir	Monthly Losses [m³]	Monthly Losses [%]	Annual Losses [m³]	Annual Losses [%]	Treated Water to Town (System Input Volume)	Monthly Losses [m³]	Monthly Losses [%]	Annual Losses [m³]	Annual Losses [%]	Treated Water to Town (System Input Volume)	Billed Metered Consumption (Hospital)	Billed Metered Consumption (Other)	Billed Metered Consumption (Prepaid + Equitable share)	Total Billed Metered Consumption	Billed Metered Consumption	Billed Metered Consumption Figures Used	Monthly Losses [m³]	Monthly Losses [%]	Annual Losses [m³]	Annual Losses [%]	Monthly Losses [m³]	Monthly Losses [%]	Annual Losses [m³]	Annual Losses [%]			
Jan05	04/05															5290																	
Feb05																10700																	
Mar05																8660																	
Apr05																8310																	
May05																6090																	
Jun06	05/06															4280		1890															
Jul06															5650																		
Aug06															6620																		
Sep06															8070																		
Oct06															8443		2494																
Nov06	06/07														8000		2213		1 559														
Dec06															10640		3112		882														
Jan07															9262		3054	2903		914	6 871												
Feb07															7920		2675	2864	1 185	6 724													
Mar07															10370		2948	635	6 370														
Apr07	07/08														9130		3418	807	905	7 360													
May07															7090		2001	2953	1 175	6 029													
Jun07															7720		1959	2746	1 119	6 874													
Jul07		336	360	4285	4981			6330	-1349	27.1			6330	1976	2785	1 031	5 792	5 385	5 385	845	14.9												
Aug07		336	89	6182	7207			5400	-807	11.2			5400	2076	2852	1 221	6 420	5 081	5 081	1 319	20.6												
Sep07	08/09	336	51	5230	5817			8190	-2533	45.1			8190	2167	2869	1 231	6 226	7 289	7 289	861	10.6												
Oct07		336	27	7221	8084			9130	-1046	12.9			9130	2157	2935	1 357	6 449	7 766	7 766	1 364	14.9												
Nov07		336	39	7489	7864			12540	-4676	37.3			12540	4128	2843	1 403	6 372	9 610	9 610	2 530	23.4												
Dec07		336	1677	16053	18065			12785	-5280	29.2			12785	3823	2958	1 501	6 282	10 142	10 142	2 643	20.7												
Jan08		361	24	6580	6965			12248	-1040	7.8			12248	3812	3168	1 614	6 798	6 554	6 554	2 314	20.9												
Feb07	09/10	301	6350	4739	11390			8770	-1905	25.9			8770	2193	2671	3906	6 770	6 898	6 898	1 672	21.3												
Mar07		301	6350	4739	11390			8780	-2600	22.8			8780	2603	2482	3485	6 580	3 473	3 473	5 317	60.5												
Apr07		288	3676	4276	10158			8440	-1724	17.0			8440	2266	1408	3 196	6 440	3 857	3 857	1 987	30.9												
May07		28	2428	7327	9783			7110	-2673	27.3			7110	1359	2831	2810	6 800	2 746	2 746	4 364	61.4												
Jun07		4	2658	7346	9399			6487	-2912	31.0			6487	1339	3055	2138	6 560	4 389	4 389	2 102	32.4												
Jul07	10/11	9	1906	9120	9120			6917	-2707	24.2			6917	1881	3098	2247	6 169	4 105	4 105	2 508	40.6												
Aug07		11	3031	8642	12684			8870	-3814	30.1			8870	2424	3858	1088	6 570	5 218	5 218	3 652	41.2												
Sep07		7	10162	11339	12355			8710	-3129	28.4			8710	2250	4145	3058	6 560	7 110	7 110	1 500	22.9												
Oct07		129	5580	10162	9906			8670	-1236	12.5			8670	7724	3770	2456	6 950	10 313	10 313	1 643	18.4												
Nov07		7	7032	1145	8184			8940	-756	-9.2			8940	3558	3643	1919	6 120	8 249	8 249	691	7.7												
Dec07	11/12	10	5178	10158	10158			8440	-1724	17.0			8440	2266	1408	3 284	6 440	3 857	3 857	1 987	30.9												
Jan08		63	5593	2880	8536			9520	-1384	-16.2			9520	6420	3468	32	6 920	5 865	5 865	4 055	40.9												
Feb08		18	2261	5631	7900			8190	-2600	-3.3			8190	2687	3064	-371	6 380	9 922	9 922	-1 762	-21.6												
Mar08		2351	480	7454	7454			8520	-706	-8.3			8520	6118	3402	-1 018	6 500	22 219	22 219	0	0.0												
Apr08		1247	0	7610	8857			9450	-593	-6.7			9450	6522	5124	-2186	6 450	16 210	16 210	0	0.0												
May08	12/13	519	3	10360	10360			7927	-2712	25.5			7927	3712	3098	-3810	6 560	38 443	38 443	0	0.0												
Jun08		286	3	8900	9192			6823	-2389	-25.8			6823	4167	3039	-353	6 823	17 823	17 823	0	0.0												
Jul08		336	2	7356	7694			7670	-24	-0.3			7670	3350	3964	356	7 670	26 913	26 913	0	0.0												
Aug08		3	102	7948	8053			8547	-494	-6.1			8547	2057	4111	6 092	6 950	10 081	3 860	487	5.7												
Sep08		769	2322	10876	13967			9253	-4714	33.8			9253	2203	4914	2643	8 760	7 495	7 495	1 758	19.0												
Oct08	08/09	1053	2184	12348	15585			11070	-4515	28.0			11070	2379	3957	4939	10 910	8 417	8 417	2 653	24.0												
Nov08		2364	1808	11369	15525			11610	-5115	25.2			11610	2341	6136	2933	11 030	10 153	10 153	1 457	12.8												
Dec08		4330	533	13163	18526			12030	-6286	34.4			12030	6882	6429	-701	12 650	10 083	10 083	1 947	24.0												
Jan09		1963	2320	12533	16853			12533	-6286	34.4			12533	6741	6239	1432	14 762	14 762	14 762	-2 229	-17.8												
Feb09		1890	2747	11549	16177			10020	-6157	38.1			10020	2212	4911	3747	10 870	10 152	10 152	-132	-1.3												
Mar09	09/10	1605	2093	11847	15545			8877	-678	-4.3			8877	1539	2824	407	8 370	8 257	8 257	620	7.0												
Apr09		1605	2093	11847	15545			9160	-414	-2.8			9160	1223	3877	4580	9 380																



Legend	Losses	Description	Calculations (Meters)
A	Bulk Water Supply Losses	Borehole 1	M1
B		Borehole 2	M2
C		Soutriver	M3
D		Total Raw Water Supply	M1 + M2 + M3
E		Treated Water to Reservoir	M4
F		Monthly losses m3	D - E
G		Monthly losses %	F / D
H		Annual losses m3	F over 12 months
I		Annual losses %	G over 12 months
J	Network Distribution Losses	Treated Water to Town (022)	M5
K		Monthly losses m3	D - J
L		Monthly losses %	K / D
M		Annual losses m3	K over 12 months
N		Annual losses %	L over 12 months
O		Treated Water to Town (022)	J
P		Consumption Hospital	M 14
Q		Consumption Other	M6+M7+M8+M9+M10+M14+M13+M15+M16+M17+M18+M19+M20+M21+M22
R		Consump. Prepaid + Equitable	M5 - (P + Q)
S		Total	P + Q + R
T		Consumption (Water Sales)	Water Sales (Treasury)
U		Figures Used	Either S or T
V		Monthly losses m3	O - U
W		Monthly losses %	V / O
X		Annual losses m3	V over 12 months
Y		Annual losses %	W over 12 months
Z	Total Losses	Monthly losses m3	D - U
AA		Monthly losses %	Z / D
AB		Annual losses m3	Z over 12 months
AC		Annual losses %	AA over 12 months

WATER BALANCE FOR NELSPOORT [m³/Month]



ANNUAL WATER REQUIREMENT FOR NELSPOORT DISTRIBUTION SYSTEM [m³/Year]

